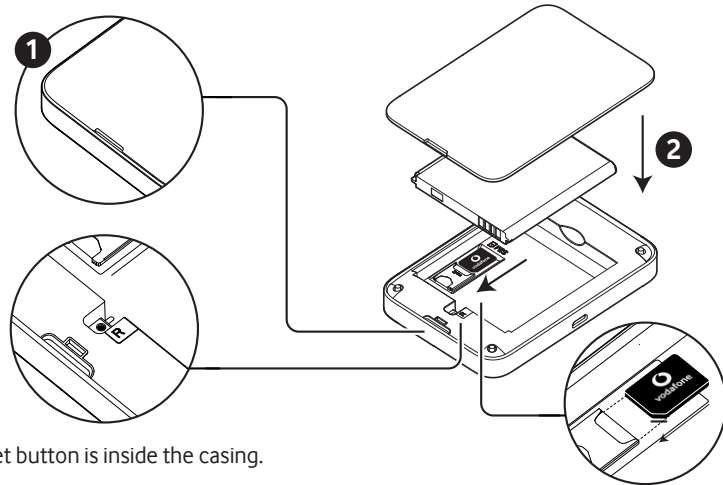


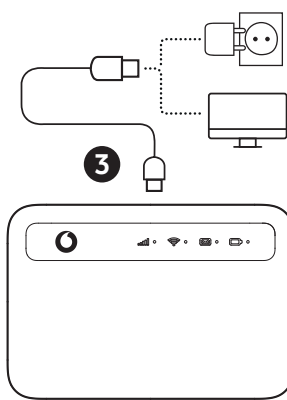
Open



Reset button is inside the casing.

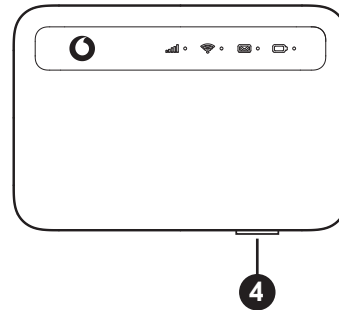
Insert battery

Charge



Start

Press and hold the power key



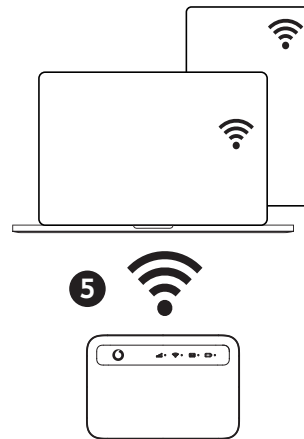
Connect

Choose Wi-Fi on your computer, smartphone or tablet settings, then select your Mobile Wi-Fi network name.

Enter the password to connect and open the web interface.

When you first connect to the network you may be asked to activate your SIM. If you're asked to unlock your SIM card, go to <http://vodafonemobile.wifi> and enter the PIN for your SIM.

Turn over for more information about using your Vodafone Mobile Wi-Fi.



Power-saving mode

After **30 seconds** without a button being pressed, all the LED lights will turn off. Press any button to turn them on again.

After **10 minutes** without the Wi-Fi being used, the mobile network connection will turn off. When you press any key or when a device accesses the Wi-Fi, connection to the mobile network will be restored.

After **30 minutes** without the Wi-Fi being used, the Wi-Fi network will turn off. Press any button to turn the Wi-Fi network back on.

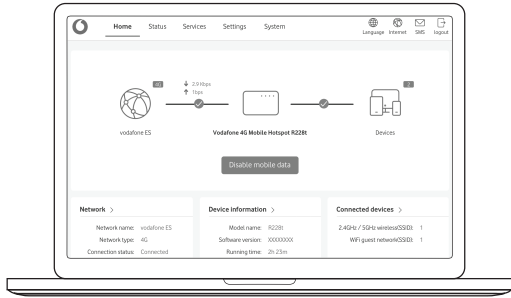
When power saving mode is activated, all the LED lights will turn off. When power saving mode is deactivated, you will notice the LED lights blinking blue intermittently for approximately 10 seconds. After this time, the LED lights will return to normal to indicate the status of your device.

CJB73JOVDAAE

Using the web interface at vodafonemobile.wifi

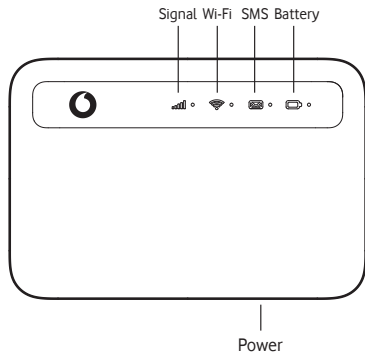
You can find the web interface on **vodafonemobile.wifi** if it doesn't appear automatically when you connect. Then login using the default password which can be found on the reminder card or on the label inside the device.

Then you can see your network and Wi-Fi status, how much data you have used, get help and support, and even send and receive SMS messages from your computer.



This device is dual-band and uses two frequencies (2.4GHz & 5GHz) for better performance. You can change the frequency band in Settings / Quick Setup.

Buttons and LED



The buttons

Power button
Press and hold for 3 seconds to power on or off your device.

Press and hold for 10 seconds to reboot your device.

Reset
Press the reset button with a pin for 3 seconds to reset the device to factory mode.

What the lights mean

Signal

- Solid blue - The device is connected to network
- Solid red - Weak network signal or SIM card not available
- Flashing blue - the device is disconnected from the network

Wi-Fi

- Solid blue - Wi-Fi is enabled
- Off - Wi-Fi is off

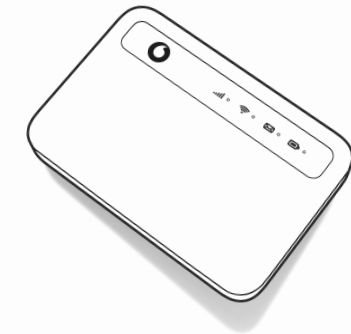
SMS

- Solid blue - New message(s)
- Flashing blue - SMS inbox is full
- Fast flashing blue - Device update available at vodafonemobile.wifi
- Off - No new message

Battery

- Solid blue - Battery level: 21%
- Flashing blue - The device is charging
- Solid red - Battery level is low

Vodafone 4G Mobile Hotspot
Model R228t
Quick Start Guide



© Vodafone Group 2022. Vodafone and the Vodafone logos are trade marks of Vodafone Group. Any product or company names mentioned herein may be the trade marks of their respective owners.